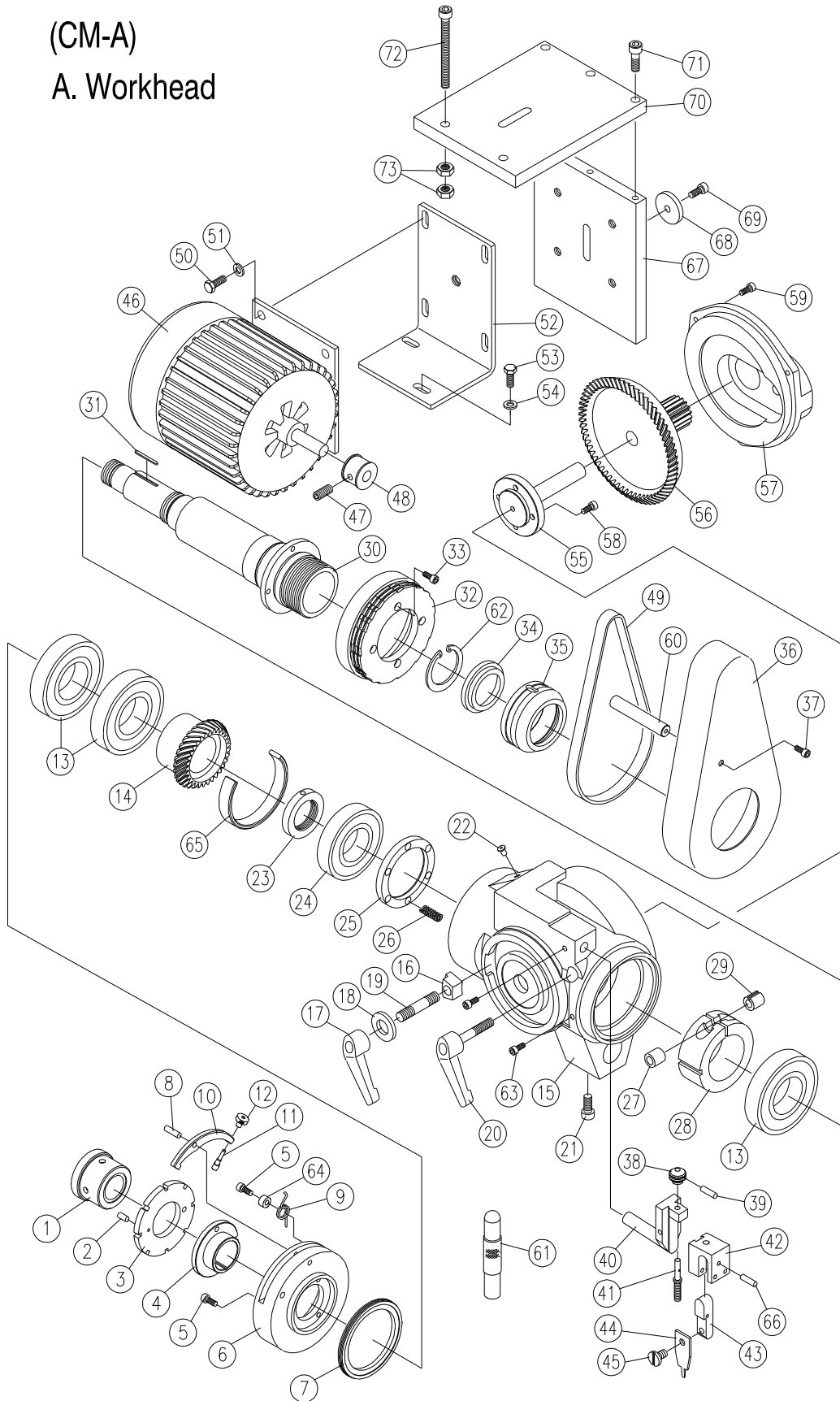




Appendix 2 Exploding diagram of CM-A

(CM-A)
A. Workhead



(CM-A) A. Workhead (1/2)							
Ref No.	Part No.	Part Name	Q'ty	Ref No.	Part No.	Part Name	Q'ty
1	C-5025	Spindle screw nut	1	33		Hex. socket screw	4
2		Pin	1	34	C-5006	Collet head ring	1
3	C-6041	Index ring	3	35	C-5005	Chuck screw nut	1
4	C-5024	Index ring coupled seat	1	36	C-5028	Belt wheel guard	1
				37		Round head screw	2
5		Hex. socket screw	4	38	C-6017-a	Adjusting screw nut	1
6	C-5018	Index ring seat	1	39		Pin	1
7	C-5017	Bearing screw nut	1	40	C-6116	Slide seat	1
8		Pin	1	41	C-6017-b	Adjusting screw	1
9	C-5019	Spring	1	42	C-6118	Upper r slide seat	1
10	C-5020	Pawl	1	43	C-6119	Cutter rack	1
11	C-5023	Pawl fixing screw seat	1	44	C-6121	Controls plate	1
				45		Fixing screw	1
12	C-5022	Pawl fixing screw	1	46		Workhead motor	1
13		Bearing	3	47		Fixed screw	1
14	C-5016	Bevel gear	1	48	C-5030	Belt wheel	1
15	C-5001	Workhead	1	49		Belt(15FLS30)	1
16	C-5026-a	Workhead fixing block	2	50		Hex. bolt	1
				51		Flat washer	1
17		Clamping lever	2	52	C-5027	Motor support	1
18		Flat washer	2	53		Hex. bolt	3
19	C-5026-b	Workhead fixing level	2	54		Flat washer	3
				55	C-5014	Bevel gear shaft	1
20	C-5009	Clamping lever	1	56	C-5015	Bevel gear	1
21		Hex. socket screw	1	57	C-5002	Workhead cover	1
22		Oil cover	2	58		Hex. socket screw	4
23	C-5012	Lock nut	1	59		Round head screw	3
24		Bearing	1	60	C-5029	Lock rod	1
25	C-5011	Bearing washer	1	61	C-6040	Workhead strut	1
26		Spring	6	62		C-ring	1
27	C-5008-b	Fixed ring	1	63		Hex. socket screw	2
28	C-5007	Spindle fixed ring	1	64	C-5013	Collar	1
29	C-5008-a	Fixed nut	1	65	C-5021	Collar	1



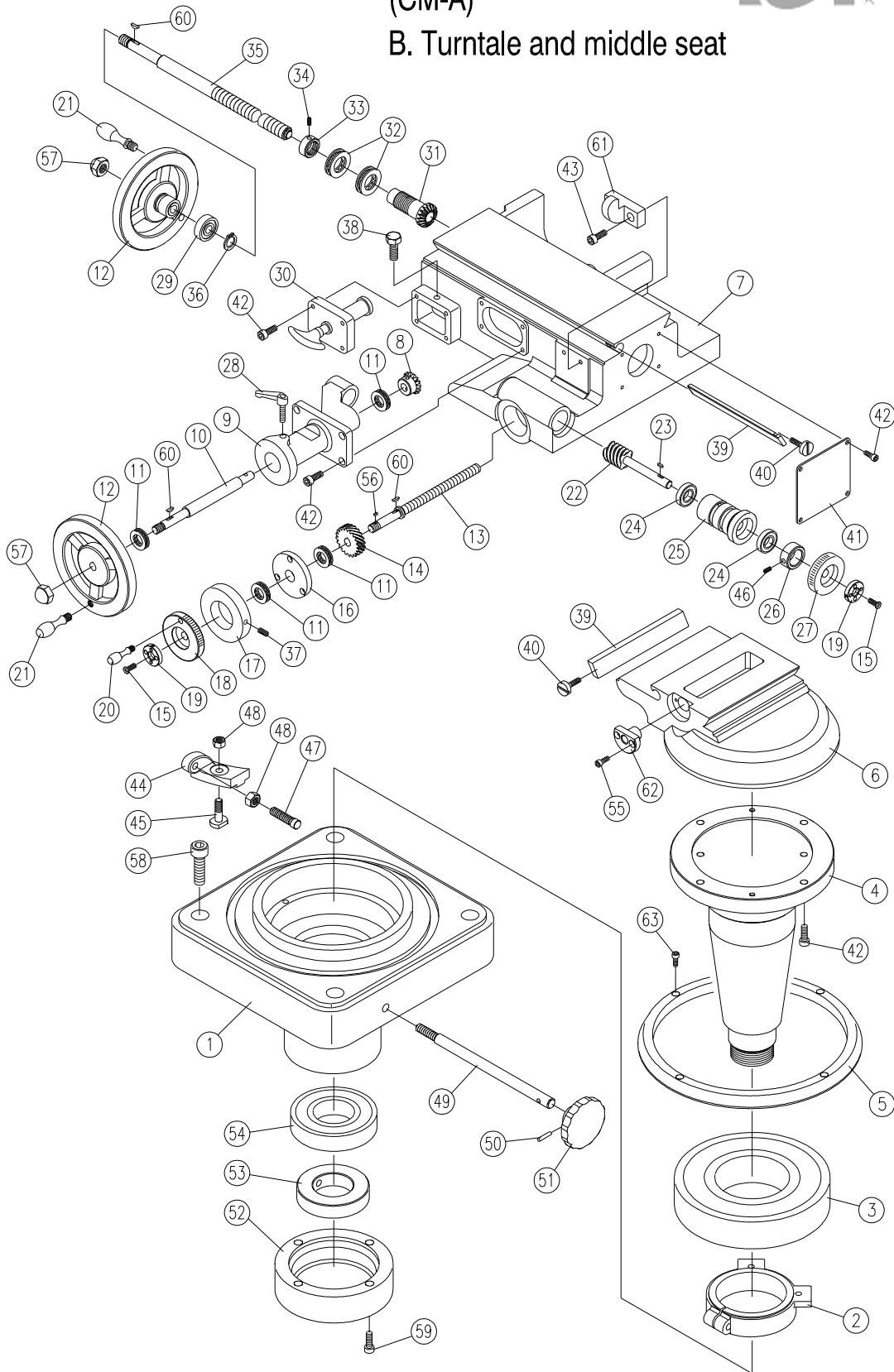
30	C-5003	Workhead spindle	1	66		Pin	1
31		Key	1	67	C-5027-2	Motor fixed plate	1
32	C-5004	Index ring	1	68		Washer	1

(CM-A) A. Workhead (2/2)

Ref No.	Part No.	Part Name	Q'ty	Ref No.	Part No.	Part Name	Q'ty
69		Hex. socket screw	1				
70	C-5027-1	Motor fixed plate	1				
71	C-6041	Index ring	1				
72		Hex. socket screw	1				
73		Hex. head nut					

(CM-A)

B. Turntale and middle seat





(CM-A) B. Turntable and middle seat

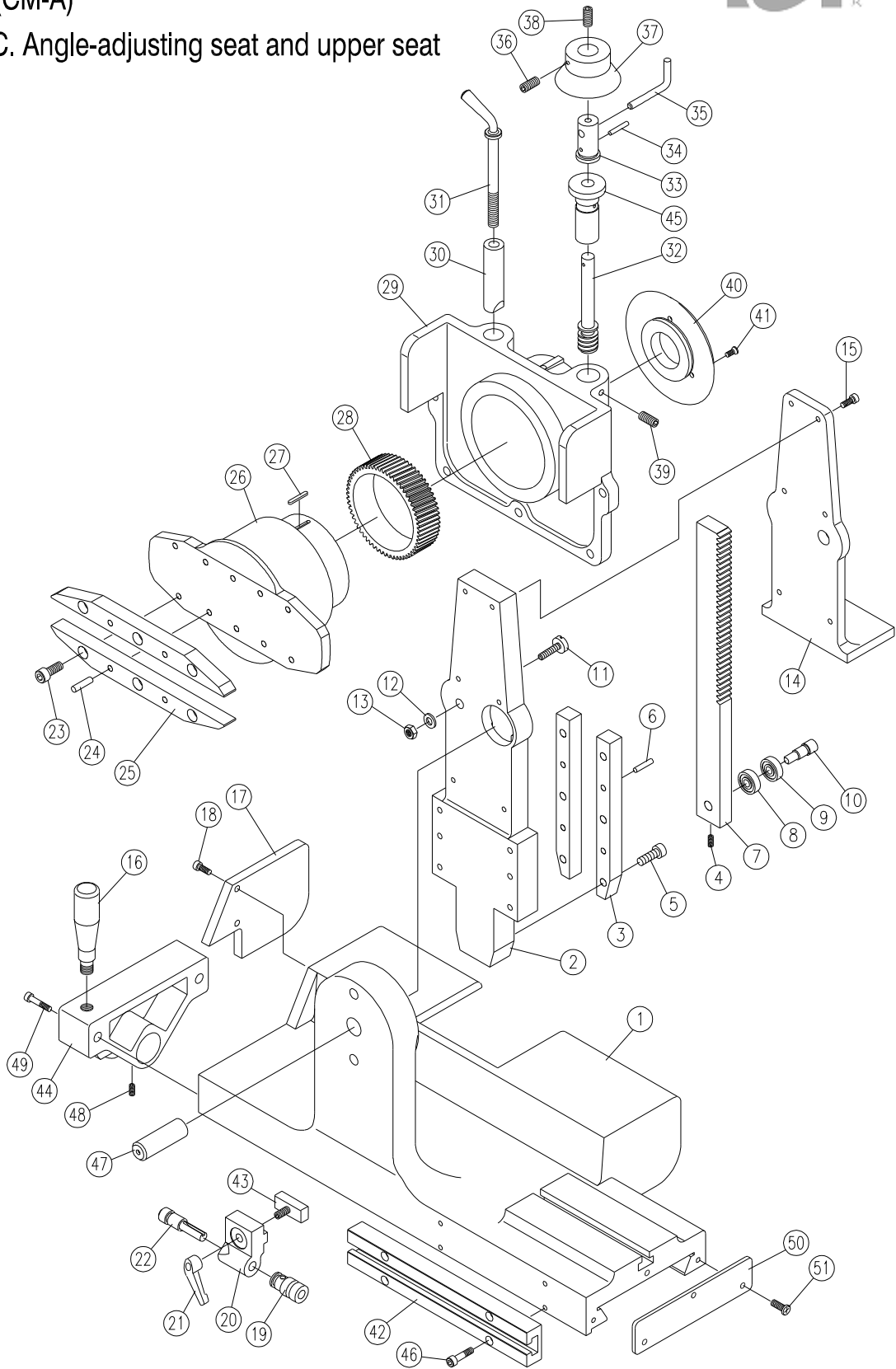
Ref No.	Part No.	Part Name	Q'ty	Ref No.	Part No.	Part Name	Q'ty
1	C-2003	Turntable base	1	32		Bearing	2
2		Fixed ring	1	33	C-3107	Fixing screw nut	1
3		Bearing	3	34		Fixing screw	1
4	C-2005	Turntable shaft	1	35	C-3106	Leading screw	1
5	C-2002	Index ring	1	36		C-ring	1
6	C-2001	Turntable	1	37		Set screw	2
7	C-3101	Middle seat of turntable	1	38		Oil Cover	1
				39	C-5126	Slide pin	2
8	C-3104	Bevel gear	1	40		Adjusting screw of slide pin	4
9	C-3102	Gear fixed rack	1				
10	C-3107	Shaft	1	41		Guard	1
11		Bearing	4	42		Hex. socket screw	12
12	C-4015	Hand wheel	2	43		Hex. socket screw	2
13	C-3110	Screw rod	1	44	C-2010	Locating pin stop block	2
14	C-3112	Worm gear	1				
15		Bearing bush	2	45	C-2012	Locating block	2
16	C-3113	Thrust block seating	1	46		Fixing screw	1
17	C-3115	Hinge speed forward & backward Index ring	1	47	C-2011	Adjusting screw	2
				48		Hex. socket nut	4
18	C-3114	Hinge speed forward Backward hand wheel	1	49	C-2009	Fixing rod	1
				50		Pin	
19	C-3116	Cover	2	51	C-2008	Fixing handle	1
20	C-3117	Handle	1	52	C-2007	Bearing cover	1
21	C-4017	Handle	2	53	C-2006	Bearing fixing nut	2
22	C-3119	Worm gear	1	54		Bearing	1
23		Key	1	55		Fixing screw	2
24		Bearing	2	56		Key	1
25	C-3118	Fixing toggle	1	57		Screw nut	2
26	C-3120	Index ring	1	58		Hex. socket screw	4
27	C-3121	Micro adjusting	1	59		Hex. socket screw	4



		hand wheel		60		Key	2
28	C-3031	Handle fixed screw	1	61	C-3122	Slide stop block	1
29		Bearing	1	62	C-3111	Screw nut	1
30		Oil filler	1	63		Fixing screw	1
31	C-3105	Bevel gear	1				

(CM-A)

C. Angle-adjusting seat and upper seat



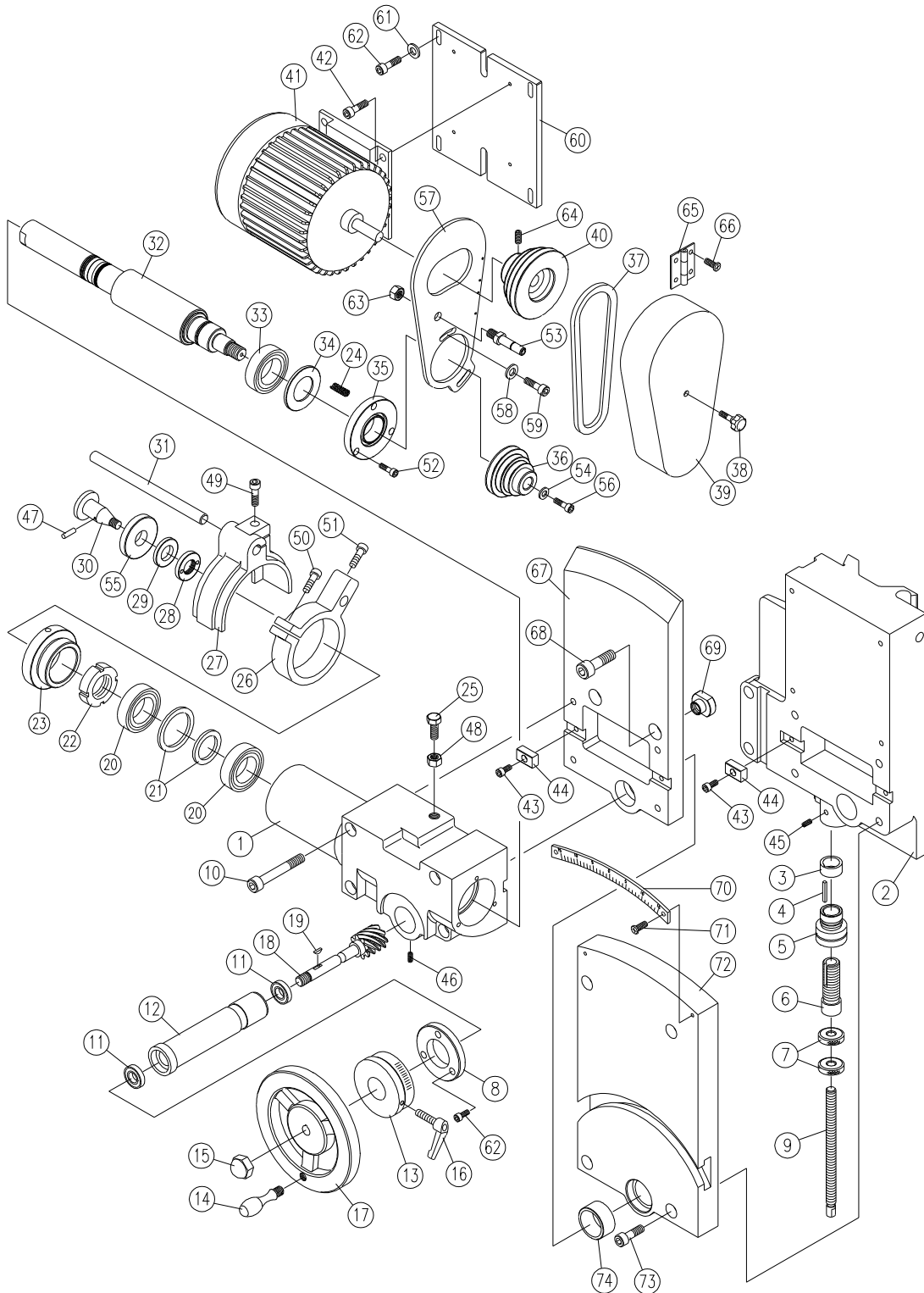


(CM-A) C. Angle-adjusting seat and upper seat

Ref No.	Part No.	Part Name	Q'ty	Ref No.	Part No.	Part Name	Q'ty
1	C-5101	Workhead base	1	25	C-5110	Rake guide plate	2
2	C-5128	Rake guide plate	1	26	C-5109	Rake guide plate	1
3	C-5130	Teeth rake guide plate	1	27		Key	1
				28	C-5109	Worm gear	1
4		Set screw	1	29	C-5107	Workhead rake seat	1
5		Hex. socket screw	6	30	C-5117	Fixing rod	1
6		Pin	4	31	C-5118	Handle	1
7	C-5105	Gear rack	1	32	C-5112	Turning worm gear	1
8		Bearing	1	33	C-5114	The joint	1
9		Bearing	1	34		Pin	1
10	C-5106	Slide block shaft	1	35	C-5115	Handle	1
11		Needle bearing stat	2	36		Fixed screw	1
12		Packing piece	1	37	C-5116	Index table	1
13		Screw nut	1	38		Fixed screw	1
14	C-5129	Guard	1	39		Fixed screw	1
15		Hex. socket screw	4	40	C-5111	Index table	1
16	C-5104	Handle	1	41		Screw	3
17	C-5103	Cover	1	42	C-5125	Slide block	1
18		Hex. socket screw	2	43	C-2012	T-bolt	2
19	C-2012	Adjusting screw	1	44	C-5102	Handle base	1
20	C-3026	Slide length adjusting screw	1	45	C-5113	Worm gear base	1
				46		Hex. socket screw	4
21		Clamping lever	1	47	C-5119	Shaft	1
22	C-3029	Adjusting ring	1	48		Set screw	1
23		Hex. socket screw	6	49		Hex. socket screw	2
24		Pin	4	50	C-3018-3	Cover plate	1
				51		Screw	3

(CM-A)

D. Grinding wheelhead





(CM-A) D. Grinding wheelhead (1/2)

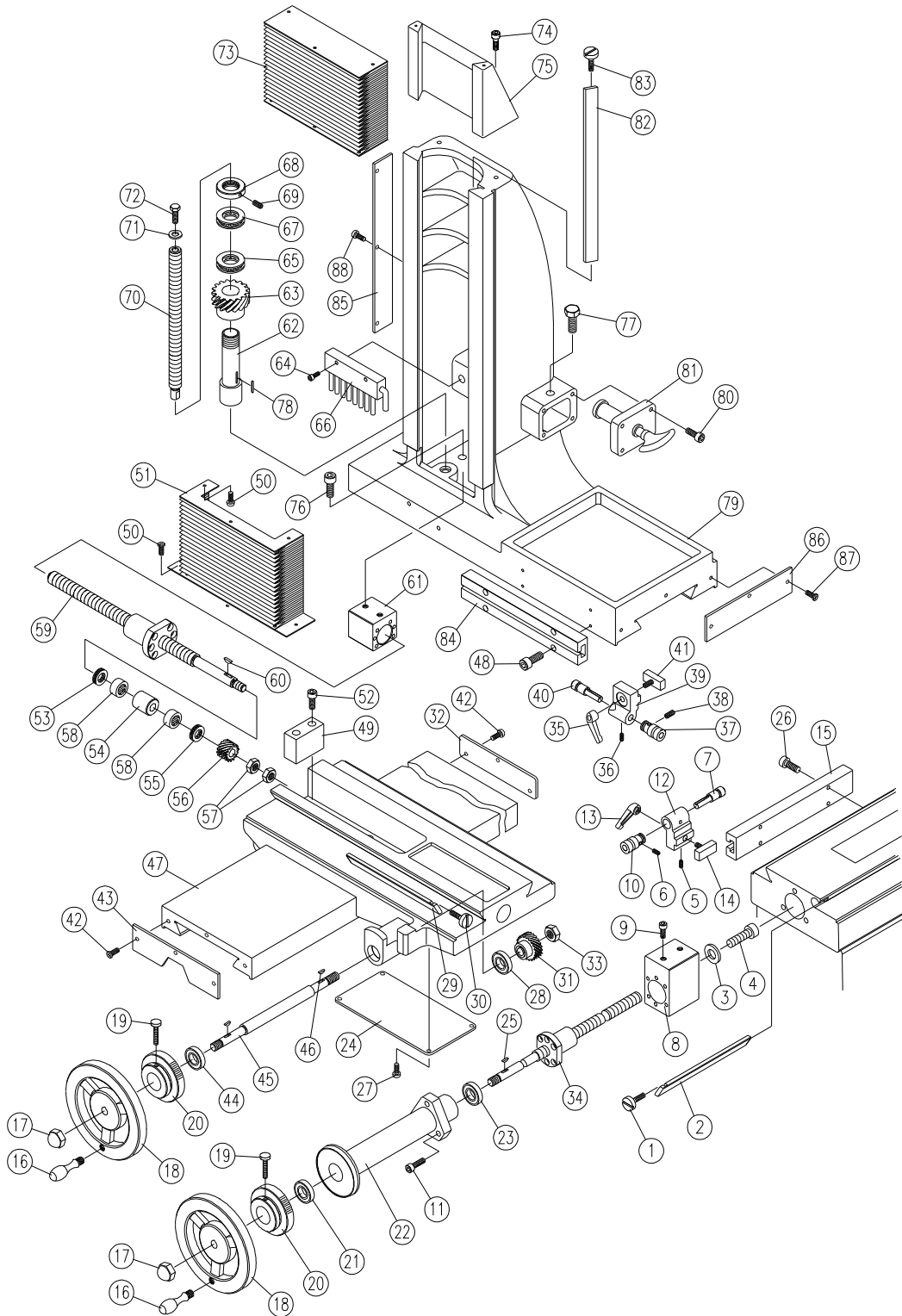
Ref No.	Part No.	Part Name	Q'ty	Ref No.	Part No.	Part Name	Q'ty
1	C-4001	Grinder base	1	32	C-4002	Spindle	1
2	C-3201	Upper & lower slide seat	1	33		Bearing	1
				34	C-4006	Spindle bush	1
3	C-3207	Nut toggle	1	35	C-4007	Bearing protective seat	1
4		Key	1	36	C-4009	Pully	1
5	C-3206	Micro- adjusting index seat	1	37		Belt	1
				38		Knob	1
6	C-3205	Micro- adjusting screw	1	39	C-4021	Motor protective shield	1
				40	4010	Motor Pully	1
7	C-3204	Fixing nut	2	41		Motor	1
				42		Hex. socket screw	4
8	C-4014	Cover	1	43		Hex. socket screw	2
9	C-3203	Height adj. screw	2	44	C-4011	Fixing block	2
10		Hex. socket bolt	1	45		Set screw	1
11		Bearing	2	46		Set screw	1
12	DC-7308	Gear wheel fixing seat	1	47		Pin	1
				48		Hex. nut	1
13	C-4016	Index table	1	49		Hex. socket screw	1
14	C-4017	Handle	1	50		Hex. socket screw	1
15		Screw nut	1	51		Hex. socket screw	1
16		Clamping lever	1	52		Hex. socket screw	3
17		Hand wheel	1	53	C-4019	Locking rod	1
18	DC-7307	Lifting pinion	1	54		Flat washer	1
19		Key	1	55		Sand wheel	1
20		Bearing	2	56		Hex. socket screw	1
21	C-4003	Sleeve	1	57	C-4018	Pully protective plate	1
22		Locking nut	1	58		Flat washer	1
23	C-4005	Bearing protective seat	1	59		Hex. socket screw	1
24	C-4008	Spring	8	60		Motor plate	1
25		Hex. head screw	1	61		Flat washer	4
26	C-6009	Protective shield fixing ring	1	62		Hex. socket screw	4
				63		Hex. nut	1
27	C-6007	Safety shield	1	64		Set screw	1



28	C-6029	Sand wheel locking nut	1	65		loose-leaf	2
29	C-6020	Sand wheel packing	1	66		Screw	4
30	C-6023	Fixing shaft (short) of sand wheel	1	67	DC-7303	Swivel plate	1
				68		Hex. socket screw	2
31	C-6008	Protective shield rod	1	69	DC-7305	T-nut	2

(CM-A) D. Grinding wheelhead (2/2)							
Ref No.	Part No.	Part Name	Q'ty	Ref No.	Part No.	Part Name	Q'ty
70	DC-7306	Index plate	1				
71		Round head screw	2				
72	DC-7302	Base plate	1				
73		Hex. socket screw	4				
74	DC-7304	Bushing	1				

(CM-A) E. Middle column and horizontal slide stop





(CM-A) E. Middle column and horizontal slide stop (1/2)

Ref No.	Part No.	Part Name	Q'ty	Ref No.	Part No.	Part Name	Q'ty
1	C-5127	Slide pin adj. screw	2	41	C-2012	T-bolt	1
2	C-3023	Slide pin	1	42	C-3010	Screw	3
3		Flat washer	1	43	C-3218-1	Cover plate	1
4		Hex. socket screw	1	44		Bearing	1
5		Pin	1	45	C-3002	Transmission screw	1
6		Set screw	1	46		Key	1
7	C-3029	Adj. screw	1	47	C-3001	Horizontal slide plate	1
8	C-3013	Leading screw nut	2	48		Hex. socket screw	6
9		Hex. socket screw	1	49		Stop block	1
10	C-3028	Adjusting ring	2	50		Screw	4
11		Hex. socket screw	2	51	C-4025	Protective cover	1
12	C-3025	Slide length adj. seat	3	52		Hex. socket screw	2
13		Clamping lever	2	53		Bearing	1
14	C-2012	T-bolt	2	54		Thimble	1
15	C-3016	Locating pin seat	2	55		Thrust bearing	1
16	C-4017	Hand wheel handle	1	56	C-3008	Screw gear	1
17		Hand wheel Fixing nut	2	57		Hex. nut	2
18	C-4015	Index hand wheel	2	58		Needle bearing	2
19	C-3015	Index fixing screw	2	59	C-3003	Lead-screw	1
20	C-3014	Index table	2	60		Key	1
21		Bearing	2	61	C-3005	Lead-screw nut	1
22	C-3009	Leadscrew bracket	1	62	C-3208	Lifting lead-screw nut	1
23		Bearing	1	63	C-3209	Lifting gear	1
24		Cover plate	1	64		Hex. socket screw	1
25		Key	6	65		Thrust bearing	1
26		Hex. socket screw	4	66		Oil passway black	1
27		screw	1	67		Thrust bearing	1
28		Bearing	1	68	C-3210	Locking ring	1
29		Slide plate pin	1	69		Set screw	1
30		Slide pin Adj .screw	2	70	C-3211	Lifting leadscrew	1
31	C-3006	Screw seat	1	71		Flat washer	1

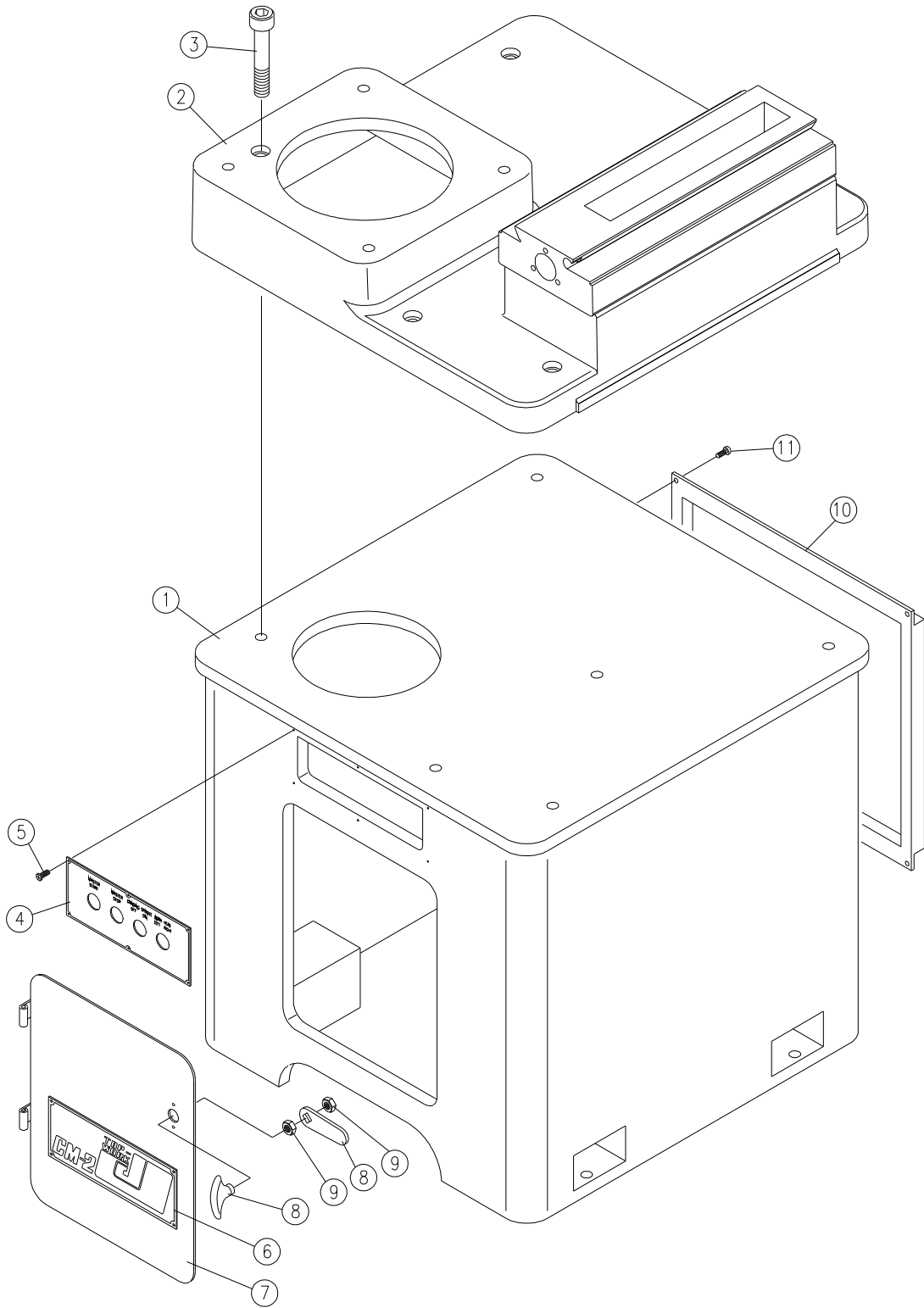


32	C-3218-2	Cover plate	1	72		Hex. screw	1
33		Screw	3	73	C-4016	Protective cover	1
34	C-3011	Leadscrew	1	74		Hex. socket screw	2
35		Clamping lever	1	75	C-3213	Protective cover seat	1
36		Set screw	1	76		Hex. socket screw	2
37	C-3028	Adj. ring	1	77		Oil cover	1
38		Pin	1	78		Key	1
39	C-3026	Slide length adj. seat	1	79	C-3202	Upper & lower slide seat	1
40	C-3029	Adjusting screw	1	80		Hex. socket screw	4

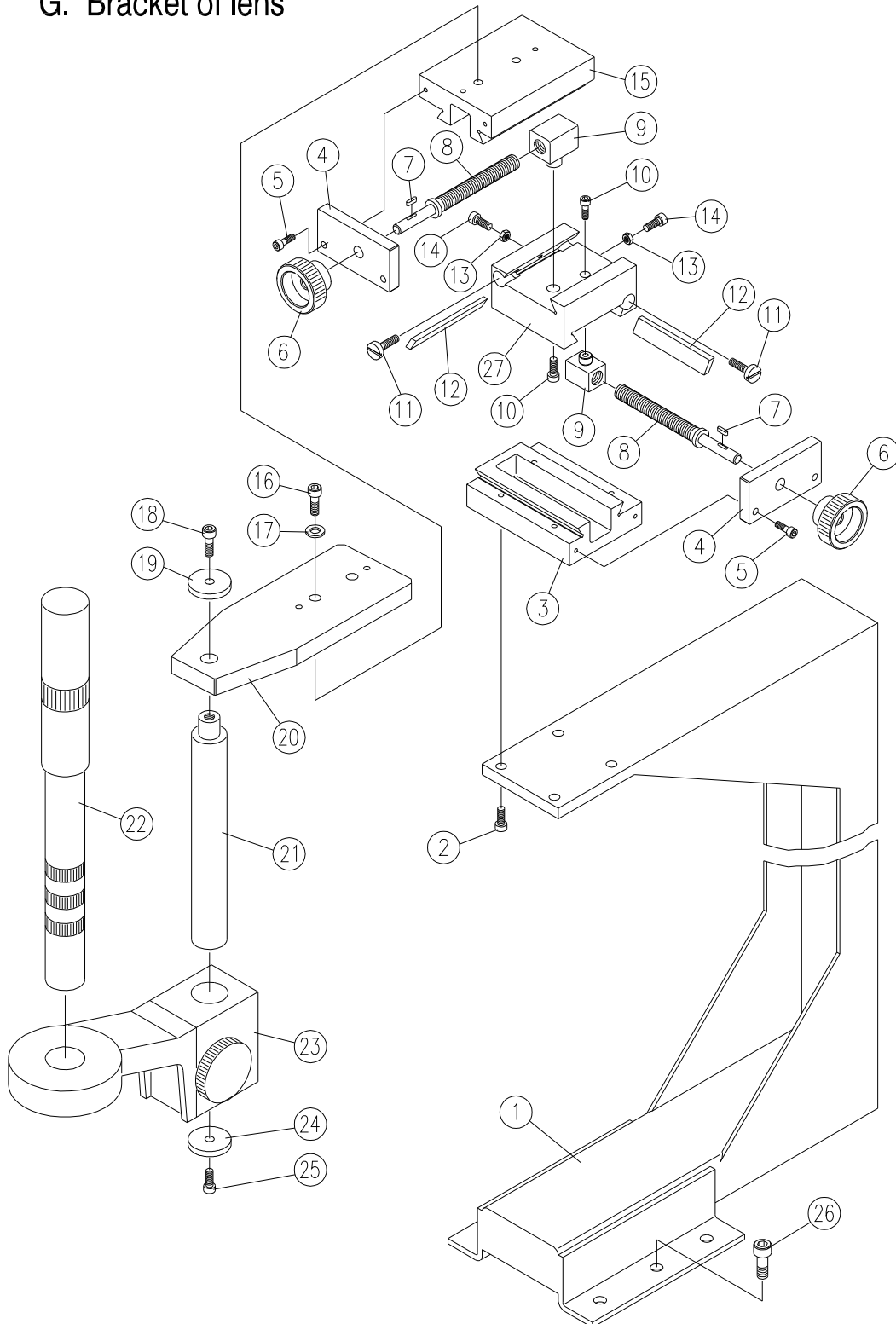
(CM-A) E. Middle column and horizontal slide stop (2/2)

Ref No.	Part No.	Part Name	Q'ty	Ref No.	Part No.	Part Name	Q'ty
81		Oil fille	1				
82	C-3022	Slide plate pin	1				
83	C-5127	Adj. screw	2				
84	C-3016	Slide seat	1				
85	C-4027	Side cover	1				
86	C-3018-2	Cover plate	1				
87		Screw	3				
88		Screw	3				

(CM-A)
F. Base and foot stand



(CM-A)
G. Bracket of lens



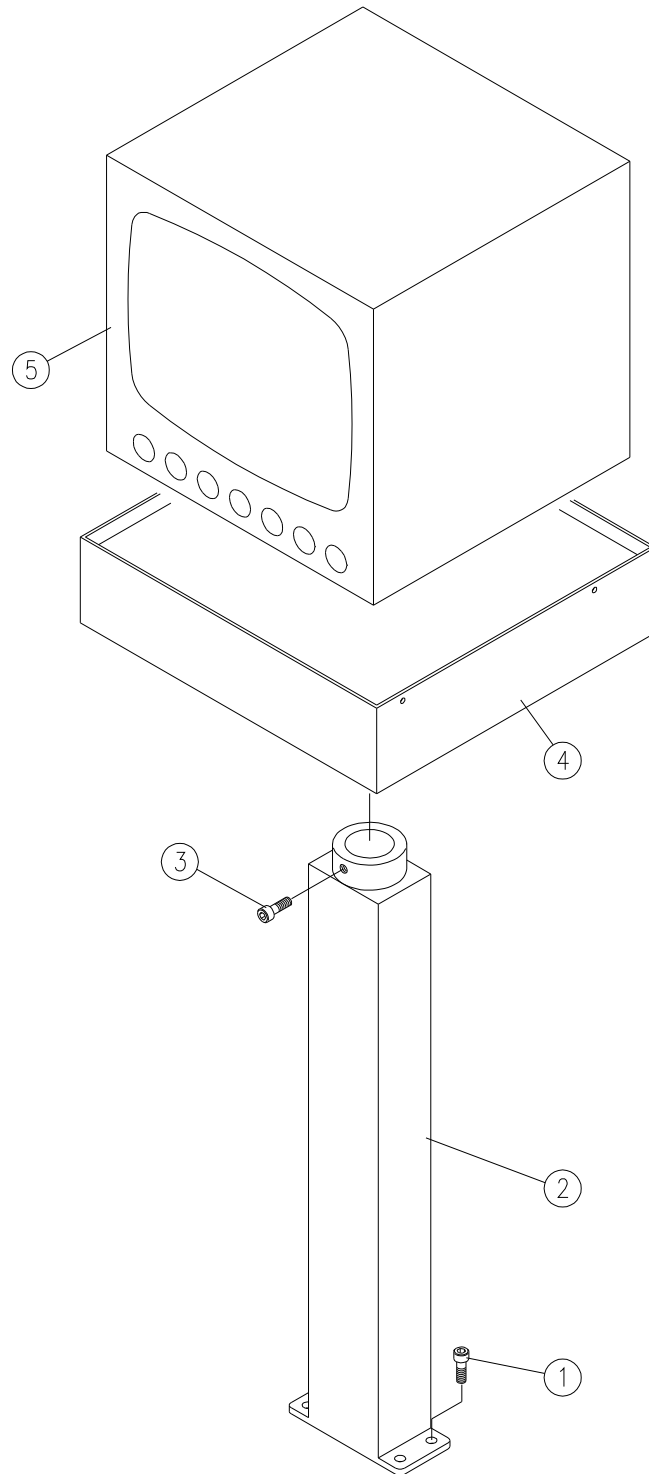


(CM-A) G. Bracket of lens

Ref No.	Part No.	Part Name	Q'ty	Ref No.	Part No.	Part Name	Q'ty
1	C-5201	Bracket of lens	1				
2		Hex. socket screw	4				
3	DF-4104	Lower seat	1				
4	DF-4109	Fixing plate	2				
5		Hex. socket screw	4				
6	DF-4110	Handle wheel	2				
7		Key	2				
8	DF-4108	Adjusting screw	2				
9	DF-4107	Nut	2				
10		Hex. socket screw	2				
11	C-5127	Adjusting screw	4				
12	DF-4106	Slide gib	2				
13		Hex. nut	2				
14		Hex. socket screw	2				
15	DF-4112	Upper seat	1				
16		Hex. socket screw	2				
17		Flat washer	2				
18		Hex. socket screw	1				
19	DF-4116	Washer	1				
20	DF-4115	Extend plate	1				
21		Fixing shaft	1				
22		Lens	1				
23		Lens seat set	1				
24	DF-4116	Washer	1				
25		Hex. socket screw	1				
26		Hex. socket screw	6				
27	DF-4105	Middle seat	1				

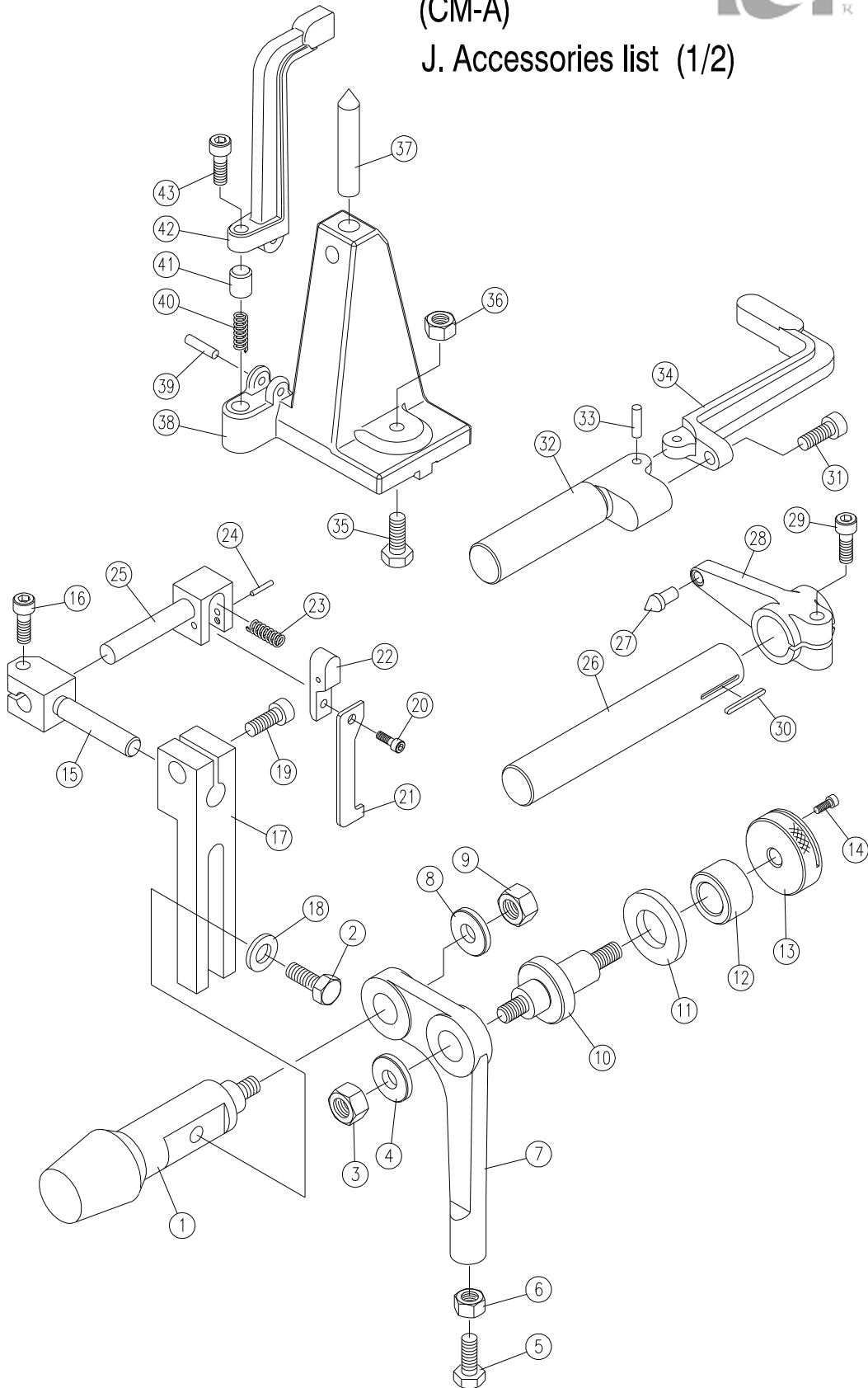
(CM-A)

H. Bracket of monitor



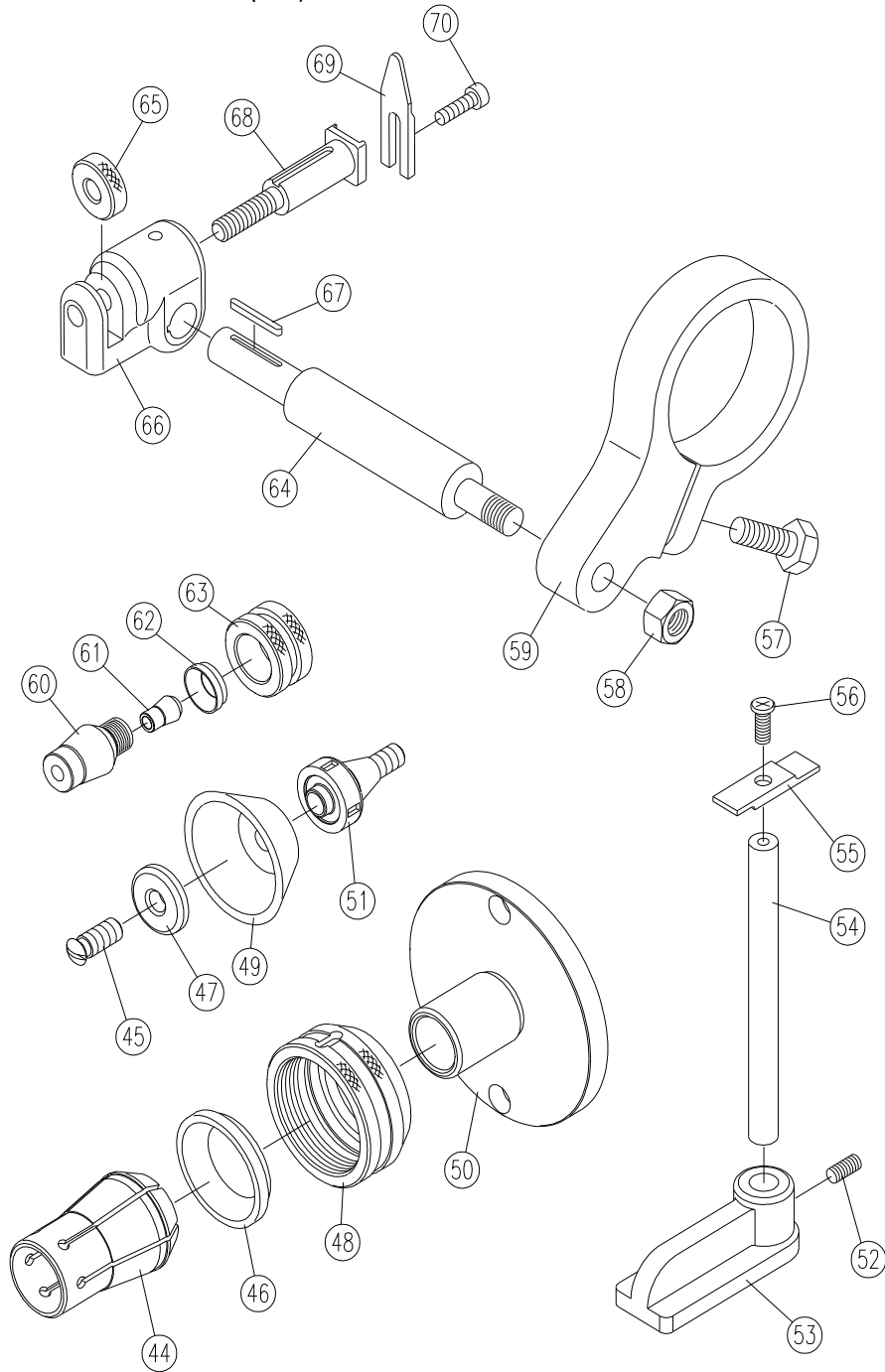
(CM-A)

J. Accessories list (1/2)



(CM-A)

J. Accessories list (2/2)





(CM-A) J. Accessories list

Ref No.	Part No.	Part Name	Q'ty	Ref No.	Part No.	Part Name	Q'ty
1	C-6101	Spindle of milling cutter rack	1	38	C-6011	Diamond cutter seat	1
				39		Pin	1
2		Hex. head screw	1	40	M-6031	Spring	1
3		Hex. nut	1	41	C-6025	Spring seat pin	1
4	C-6104	Packing piece	1	42	C-6012	Support bracket	1
5		Hex. head screw	1	43		Hex. socket screw	1
6		Hex. nut	1	44		chuck	1
7	C-6102	Cutter grinding seat	1	45	C-6113	Screw	1
8		Flat washer	1	46	C-5006	Chuck washer	1
9		Hex. nut	1	47	C-6114	Packing piece	1
10	C-6103	Milling Cutte shaft	1	48	C-5005	Chuck screw nut	1
11	C-6104	Packing piece	1	49		Sand wheel	1
12	C-6105	Cutter housing	1	50	C-6122	Pawl chuck fixing plate	1
13	C-6106	Cutter nut	1				
14		Hex. socket screw	1	51	C-6115	Sand wheel shaft	1
15	C-6107	Strut	1	52		Set screw	1
16		Hex. socket screw	1	53	C-6032	Gear plate seat	1
17	C-6108	Support bracket	1	54	C-6033	Gear column	1
18		Flat washer	1	55	C-6034	Gear	1
19		Hex. socket screw	1	56		Round head screw	1
20		Hex. socket screw	1	57		Hex. nut	1
21	C-6110	Pad	1	58		Hex. screw nut	1
22	C-6111	Pad rack	1	59	C-6006	Wheel head seat	1
23	C-6031	Spring	1	60	C-6015	Extended chuck	1
24		Pin	1	61		Spring chuck	6
25	C-6112	Cutter pad seat	1	62	C-6016	Extended chuck ring	1
26	C-6035	Supporting shaft	1	63	C-6017	Extended chuck nut	1
27	C-6037	Center needle	1	64	C-6005	Wheel head rod	1



28	C-6036	Center rack	1	65	C-6002	Adjusting screw nut	1
29		Hex. socket screw	1	66	C-6001	Wheel head padt sea	1
30		Key	1				
31		Hex. socket screw	1	67		Key	1
				68	C-6003	Adjusting screw	1
32	C-6027	Strut Of support bracket	1	69	C-6004	Wheel head pad	1
				70		Hex. socket screw	1
33		Pin	1				
34	C-6028	Support bracket	1				
35		Hex. head screw	1				
36		Hex. nut	1				
37	C-6124	Diamond cutter rack	1				